

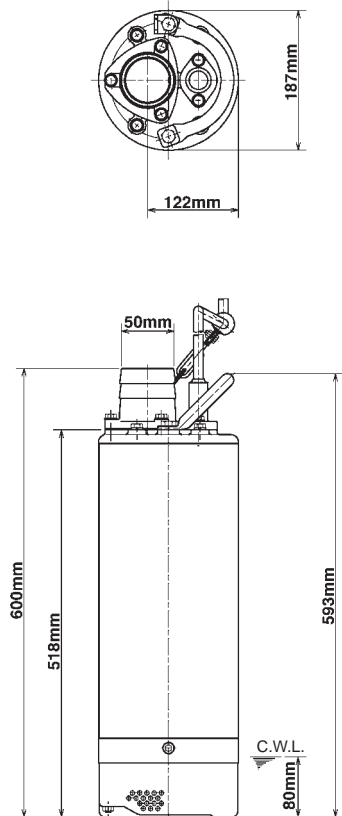


TSURUMI PUMP

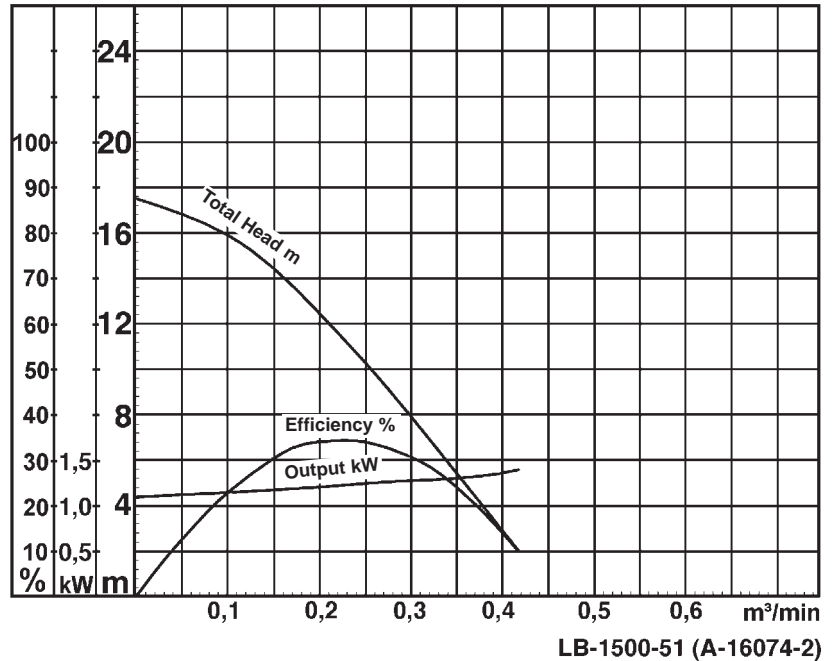
LB-1500-51

- data sheet
 - parts list
 - exploded view
 - dimensional drawing
 - sectional drawing
 - performance curve
-
- parts list as Excel-spreadsheet

Data Sheet LB-1500-51



C.W.L. = Continuous running water level **LB-1500-51**



Classification

Electric submersible pump
 Protection class IP68
 Depth of submersion max. 50m
 Semi-vortex impeller
 Max. solid handling 6mm
 Suitable for rain water, font water, ground water, sand carrying water

Electric Motor

Dry-type submersible induction motor
 Insulation class B, 2 poles, 2900 r.p.m.
 Capacitor start
 Voltage: 110V/230V, 50Hz, 1-phase
 Power input: 1,50kW
 Power output: 2,17kW
 Nominal current: 27,6A(110V) / 14,8A(230V)
 Start current: 118,0A(110V) / 65,0A(230V)

Electric cable

10m H07RN-F 3Cx4mm²

Motor Protection

Circle thermal protector
 (snap-action bi-metal device)

Shaft Seal

Double mechanical seal in oil bath
 Primary Seal:
 silicon carbide on silicon carbide
 Secondary Seal:
 silicon carbide on silicon carbide

Bearings

Shielded ball bearings, maintenance-free

Materials

Impeller:	Chromium iron casting
Casing:	BR + Natural rubber
Motor frame:	Aluminium alloy casting
Shaft:	SUS403 (EN-X6Cr13)

Discharge Connection

2" (50mm) BS-Coupling (threaded flange)

Weight

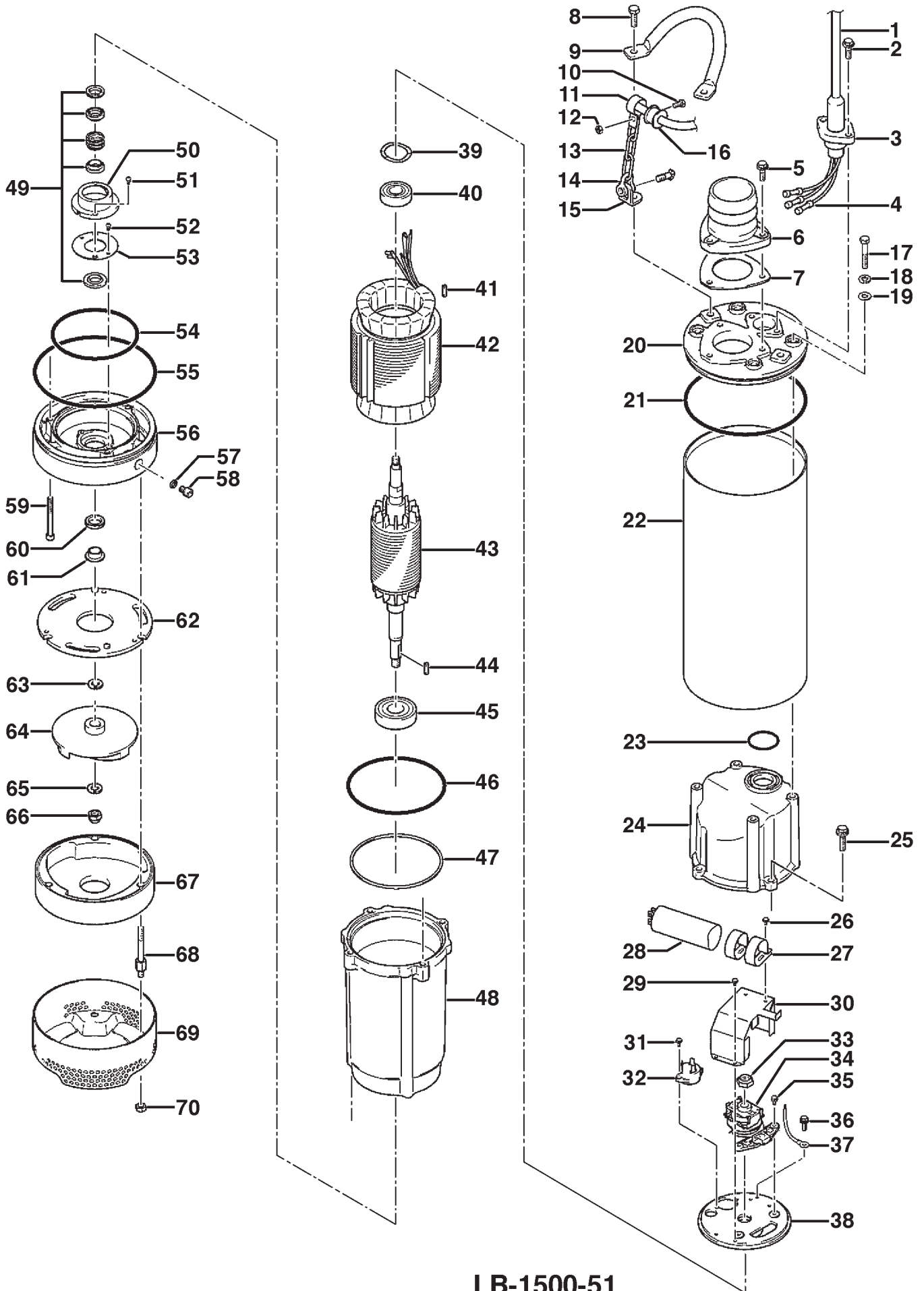
32,5 kg (dry weight of the pump without cable)

LB-1500-51

26.07.2007

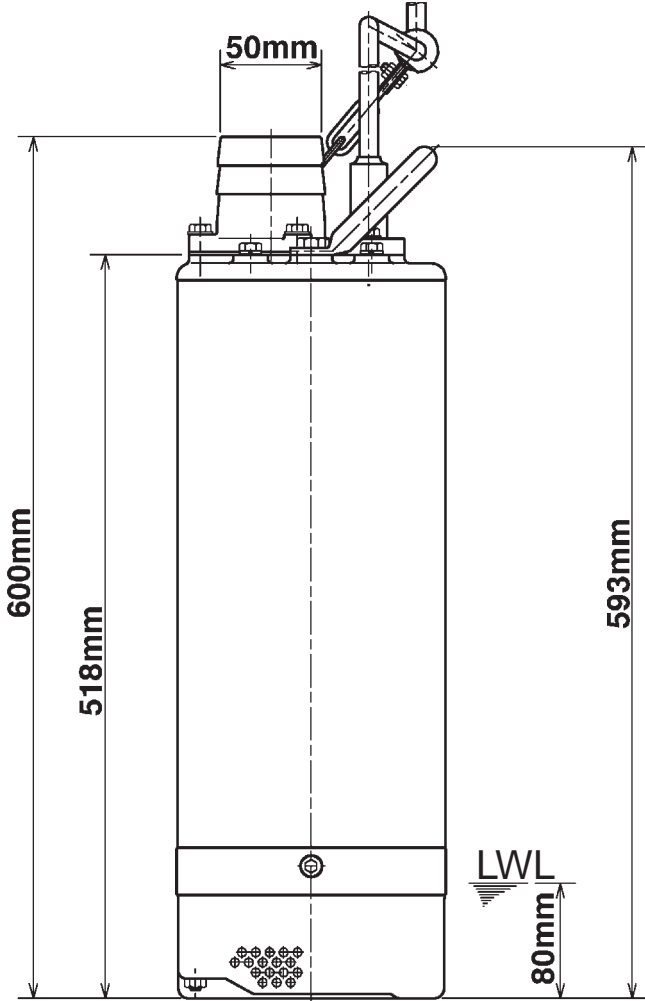
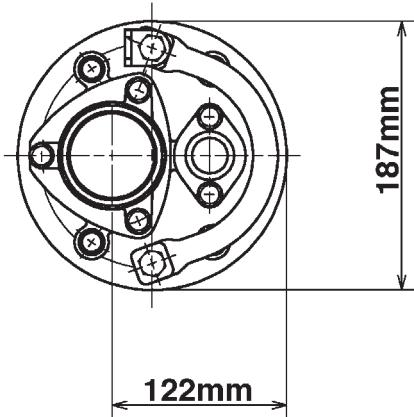
ITEM	CODE No.	DESCRIPTION	Q'TY	SIZE	MATERIAL	WEIGHT kg	REMARKS
1	001-004-82	Cabtyre Cable Set (20m) 110V-50Hz(GB	1	H07RNF3Gx4mm2(5.5)	HAR(LB1500)		
1	001-004-83	Cabtyre Cable Set (20m) 220/230/240V-	1	H07RNF3Gx4mm2(3.5)	HAR(LB1500)		
2	140-477-12	Hex. Bolt (w/plain washer)	2	M8x30	SUS304		
3	003-000-22	Gland	1	LB-1500	ADC		
4	009-276-19	Compression type Terminal 110V-50Hz(3	TMNB-5.5(Insulated)	CU		
4	009-234-15	Compression type Terminal 220/230/240	3	TGVB-3.5	CU		
5	140-477-12	Hex. Bolt (w/plain washer)	3	M8x30	SUS304		
6	032-000-45	Hose Coupling 220/230/240V-50Hz(EUF	1	KTV2-15(BSPT-2)	FC		
7	121-441-18	Packing	1	KTV2-15/22	NBR		*
8	140-075-16	Hex.Bolt	2	M10x25	SUS304		
9	068-000-25	Handle	1	LB-1500	SGP		
10	140-032-37	Hex.Bolt	1	M6x15	SWRM		
11	010-120-18	Cable Clip	1	No.2-1	SPC		
12	141-004-59	Hex.Nut	1	M6	SWRM		
13	095-131-18	Chain	1	d4(3-Link)	SS		
14	011-110-11	Shackle	1	6mm	SS		
15	070-117-11	L-Shape Fitting	1	40x25x4.5t d13Hole	SPC		
16	010-151-11	Cable Clip Rubber 110V-50Hz(GBR)	1	No.4	NBR		
16	010-151-11	Cable Clip Rubber 220/230/240V-50Hz(1	No.4	NBR		
17	140-060-18	Hex.Bolt	4	M8x50	SUS304		
18	142-163-18	Spring Washer	4	M8	SUS304		
19	142-337-15	Seal Washer	4	SM-8	SUS+NBR		*
20	051-000-31	Motor Head Cover	1		ADC		
21	122-172-18	O-Ring	1	V-175	NBR		*
22	065-000-38	Outer Cover	1	LB-1500	SPCC		
23	122-119-17	O-Ring	1	G-40	NBR		*
24	051-000-33	Motor Head Cover	1		ADC		
25	140-432-15	Hex.Bolt (w/Spring Washer/Plain Washe	4	M8x30	SUS304		
26	143-085-21	Pan Screw (w/Spring Washer)	2	M4x6	SWRM		
27	127-000-39	Capacitor Fixing Plate	2		SPCC		
28	076-000-33	Capacitor	1	600MFD-125VAC(L=100)			
29	143-086-35	Pan Screw	4	M4x8	BSBM		
30	078-000-03	Centrifugal Switch Cover	1	LB-1500	SECC		
31	143-087-23	Pan Screw (w/Spring Washer)	2	M4x10	SWRM		
32	053-219-11	Motor Protector	1	KA143-CCZL402	(H.C)		
33	141-000-07	Hex.Nut	1	M10	SUS304		
34	077-115-10	Centrifugal Switch	1	GS-114			
35	143-135-14	Pan Screw (w/Spring Washer/Plain Was	2	M4x10	SWRM		
36	140-000-44	Hex.Bolt	1	M4x8	SWRM		
37	009-000-76	Earth Terminal 110V-50Hz(GBR)	1Set	AWG10x250L(Yellow/Gree			
37	009-000-77	Earth Terminal 220/230/240V-50Hz(EUF	1Set	AWG14x250L(Yellow/Gree			
38	050-000-53	Motor Bracket	1		ADC		
39	142-195-19	Wave Washer	1	#6204/6303	SK-5		
40	052-187-16	Bearing (w/O-ring)	1	AC-6204ZZC3			
41	147-000-33	Key	1	5.5x6.5x8	S45C		
42	056-003-98	Stator 110V-50Hz(GBR)	1Set				
42	056-003-99	Stator 220/230/240V-50Hz(EUR)	1Set				
43	055-001-36	Rotor	1Set	w/Bearing			
44	147-017-11	Impeller Key	1	5x5x20l	SUS		
45	052-108-13	Bearing	1	6305ZZC3			
46	122-139-13	O-Ring	1	G-140	NBR		*
47	121-001-00	Packing	1	d132 x d139 x 2 t	NBR		*
48	064-000-83	Motor Frame	1		ADC		
49	025-243-17	Mechanical Seal	1	H-20T	SiC		Oil ISO VG32 (350ml)
50	030-144-13	Oil Lifter	1	H-20(A)(T)	Resin		
51	143-070-23	Pan Screw	2	M5x6	SWRM		
52	143-070-10	Pan Screw	2	M5x6	SWRM		
53	030-155-17	Seal Stopper	1	H-20(KTV2)	SPCC		
54	122-135-19	O-Ring	1	G-120	NBR		*
55	122-172-18	O-Ring	1	V-175	NBR		*
56	029-000-69	Oil Casing	1		FC		
57	121-246-11	Packing	1	d10.3xd16x2l	PE		*
58	035-124-12	Air Tightness Test Plug	1	M10x15	SUS304		
59	140-257-14	Hex. Socket Cap Bolt	3	M6x40	SUS304		
60	122-443-13	V-Ring	1	VR-20	NBR		
61	071-297-19	Shaft Sleeve	1	d16xd20x10l	SUS304		
62	031-000-13	Wear Ring	1	LB-1500	BRNR		
63	040-000-09	Impeller Washer		d16.2xd26x0.3/0.5l	SUS304		
64	021-007-00	Impeller (50HZ)	1	LB-1500-50	HICRFC		
64	021-007-01	Impeller (60HZ)	1	LB-1500-60	HICRFC		
65	142-165-10	Spring Washer	1	M12	SUS304		
66	141-032-14	Hex.Cap Nut	1	M12	SUS304		
67	020-002-05	Pump Casing	1	LB-1500	BRNR		
68	144-000-40	Stud Bolt	3	M8x88(13/21)	SUS403		
69	023-000-76	Strainer Stand	1	LB-1500	SPC		
70	141-005-18	Hex.Cap Nut	3	M8	SUS304		
		<Packing O-Ring Set>'					*
	173-001-59	Packing O-Ring Set	1Set	(*)			

Exploded View LB-1500-51



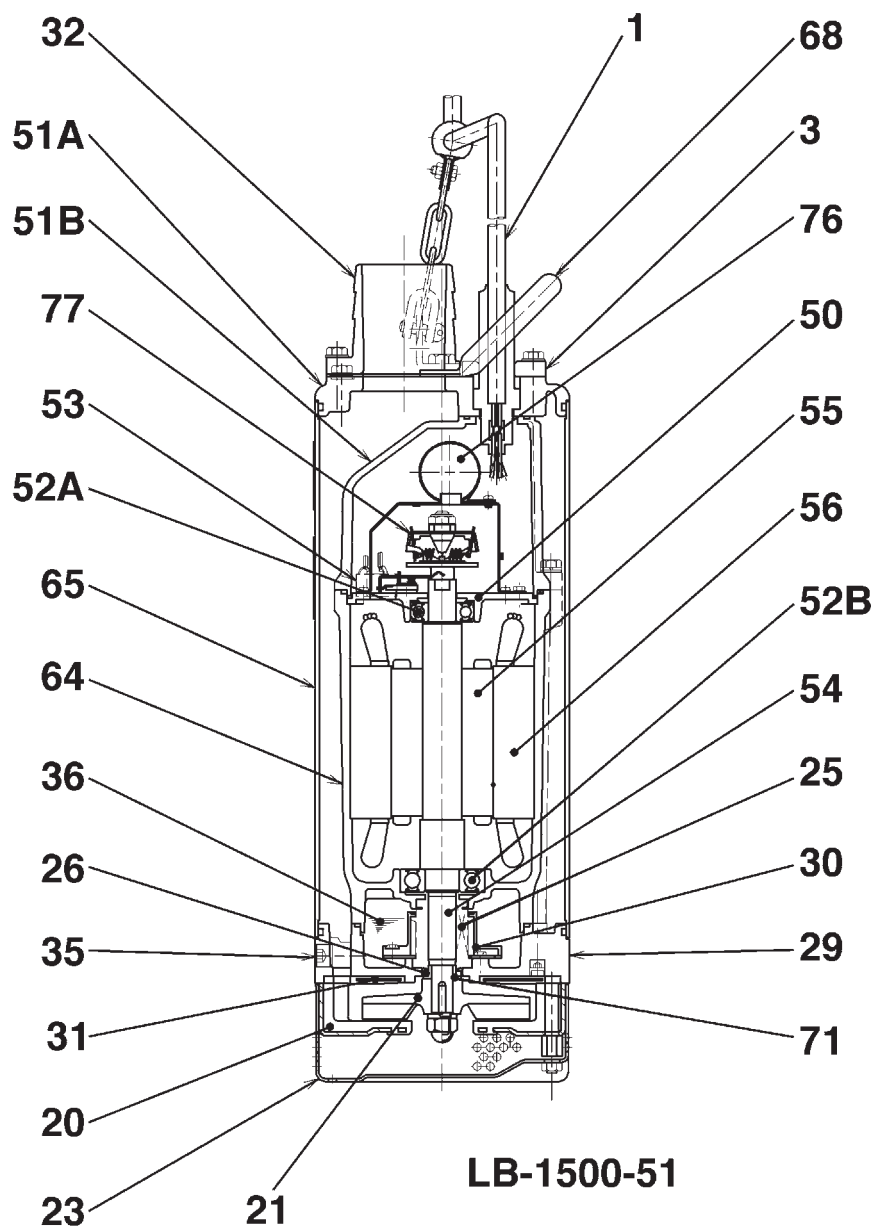
LB-1500-51

Dimensional Drawing LB-1500-51



LWL: Lowest Running Water Level **LB-1500-51**

Sectional Drawing LB-1500-51

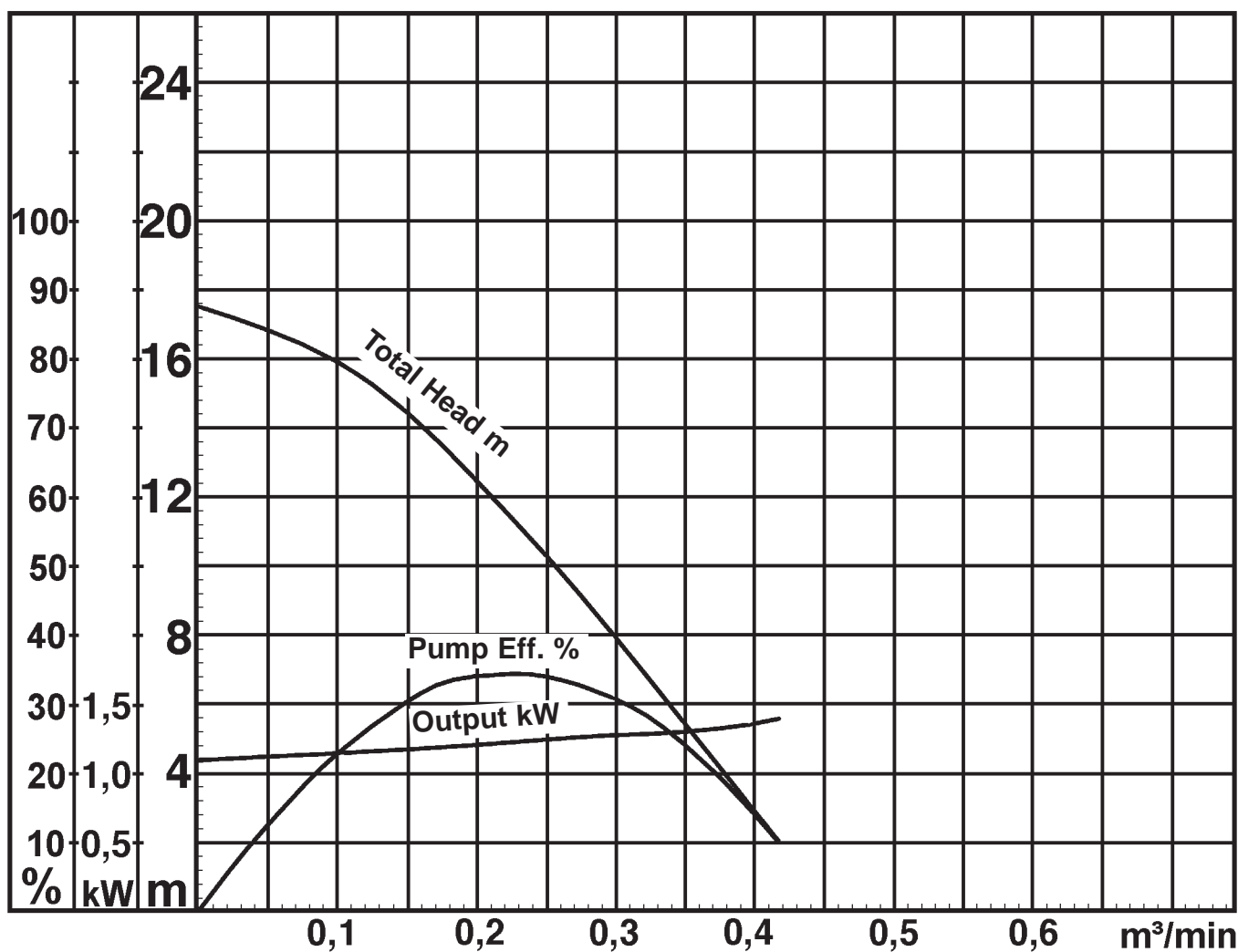


No.	Description	Qty.	Remarks	No.	Description	Qty.	Remarks
1	Cabtyre Cable	1	H07RN-F	51A	Motor Cover	1	Aluminium Die Casting
3	Gland	1	Aluminium Die Casting	51B	Motor Head Cover	1	Aluminium Die Casting
20	Pump Casing	1	BR + Natural Rubber	52A	Upper Bearing	1	6204ZZC3
21	Impeller	1	Chromium Iron Casting	52B	Lower Bearing	1	6305ZZC3
23	Strainer Stand	1	Steel Plate	53	Motor Protector	1	
25	Mechanical Seal	1	H-20T	54	Shaft	1	SUS403 (EN-X6Cr13)
26	V-Seal	1	NBR	55	Rotor	1	
29	Oil Casing	1	Grey Iron Casting	56	Stator	1	
30	Oil Lifter	1	Plastic	64	Motor Frame	1	Aluminium Die Casting
31	Wearing Plate	1	BR + Natural Rubber	65	Outer Cover	1	Steel Plate
32	Hose Coupling	1	Aluminium Die Casting	68	Handle	1	Carbon Steel Pipe
35	Oil Plug	1	SUS304 (EN-X5CrNi18-10)	71	Shaft Sleeve	1	SUS304 (EN-X5CrNi18-10)
36	Lubricant		Turbine Oil (ISO VG32)	76	Capacitor	1	
50	Motor Bracket	1	Aluminium Die Casting	77	Centrifugal Switch	1	

Pump Performance Curve

LB-1500-51

Discharge Bore	50 mm
Total Head	max.17,5 m
Capacity	max. 0,42 m ³ /min
Motor Output	1,50 kW
Motor Input	2,17 kW
Phase	1
Voltage	110/230 V
Frequency	50 Hz
Rated Current	14,8/27,6 A
Starting Current	65,0/118,0 A
Poles	2
Revolution	S.S. 2900 r.p.m.
Starting Method	Capacitor
Insulation Class	E



LB-1500-51 (A-16074-2)